

---

## Cupertino Amateur Radio Emergency Service

Topic: Field Deployment – Ark Sites

Speaker: Jim Oberhofer KN6PE, EC Cupertino ARES

Date: Thursday, 05-May-2005, 19:30

Event: Cupertino ARES meeting, Orientation Training

# Field Deployment – Ark Sites



---

# Cupertino OES Ark Strategy

## Definition

- An Ark essentially is a cache of emergency supplies located throughout the City that would be used by trained volunteers to support the city's recovery efforts.

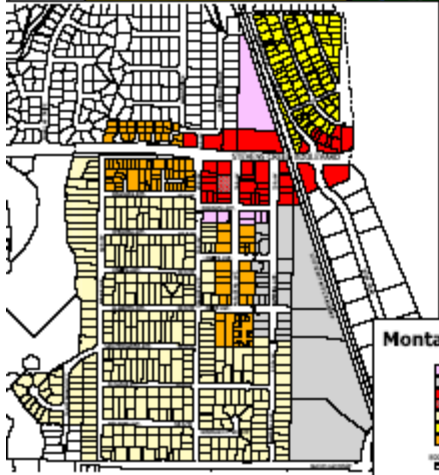
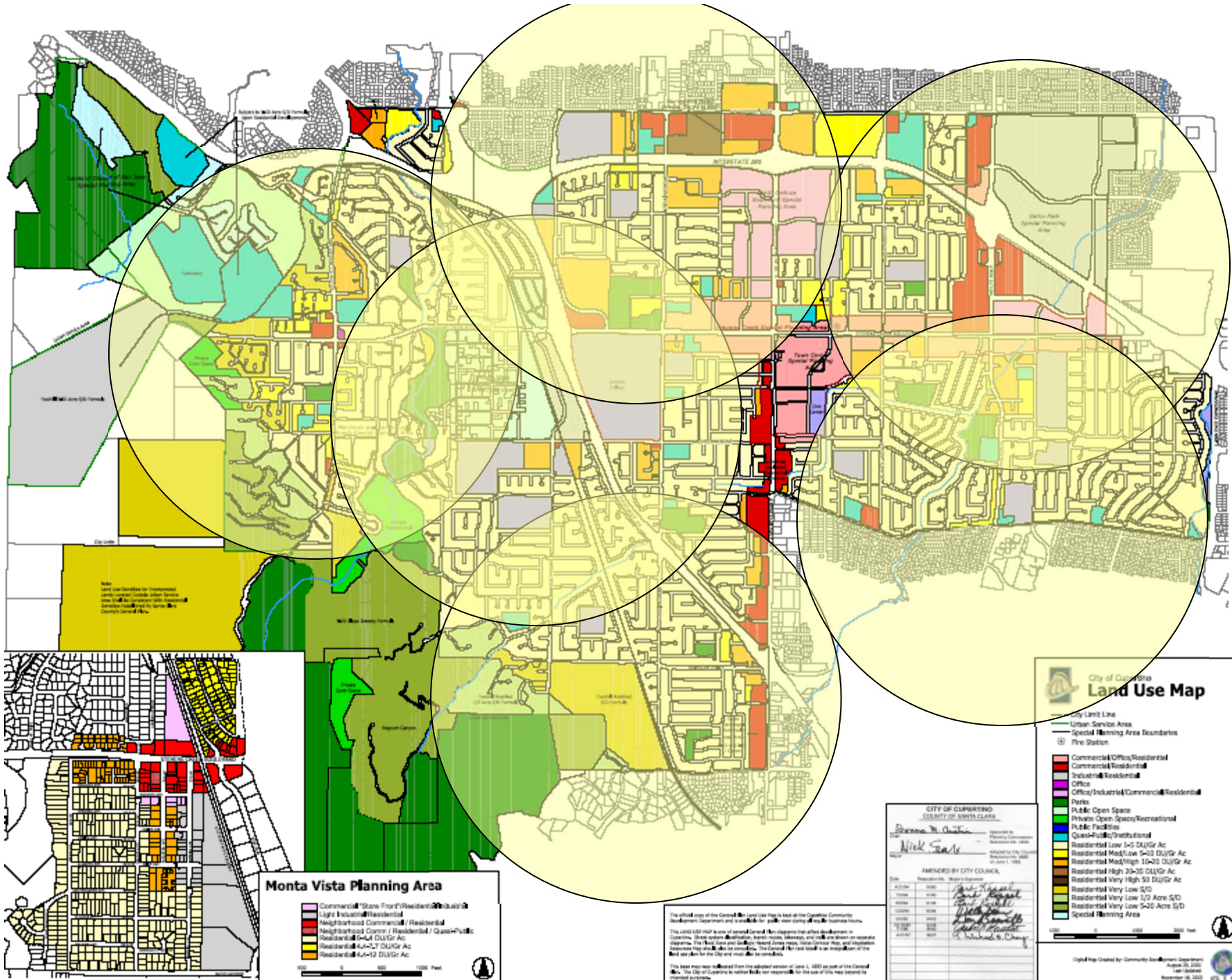
## Purpose

- Support city-wide data collection and managed response by Cupertino volunteers for City residents
- Provide critical material needed to speed the recovery

## ARK Locations

- Valco Shopping Center, behind JCPenny
- Hyde Junior High School
- Garden Gate Elementary School
- Monta Vista Fire Station





### Monta Vista Planning Area

- Commercial / Store Front / Residential / Industrial
- Light Industrial / Residential
- Neighborhood Commercial / Residential
- Neighborhood Center / Residential / Guest
- Residential 4-4.4 DU/GA Ac
- Residential 4.4-21 DU/GA Ac
- Residential 4.4-12 DU/GA Ac

0 500 1000 Feet

## City of Clippington Land Use Map

- City Limits Line
  - Urban Service Area
  - Special Planning Area Boundaries
  - Fire Station
- Commercial / Office / Residential
  - Commercial / Residential
  - Industrial / Residential
  - Office
  - Office / Industrial / Commercial / Residential
  - Parks
  - Public Open Space
  - Private Open Space / Recreational
  - Public Facility
  - Guest Home / Institutional
  - Residential Low 1-5 DU/GA Ac
  - Residential Med/Low 5-10 DU/GA Ac
  - Residential Med/High 10-20 DU/GA Ac
  - Residential High 20-35 DU/GA Ac
  - Residential Very High 35 DU/GA Ac
  - Residential Very Low S/D
  - Residential Very Low 1/2 Acre S/D
  - Residential Very Low 5-10 Acre S/D
  - Special Planning Area

**CITY OF CLIPPINGTON  
COUNTY OF SANTA CLARA**

Adopted by City Council  
*Nick Seale*  
Responsible: 10/12/2010  
Approved: 10/12/2010  
City Clerk: *[Signature]*

AMENDED BY CITY COUNCIL  
Responsible: *[Signature]*  
Approved: *[Signature]*  
City Clerk: *[Signature]*

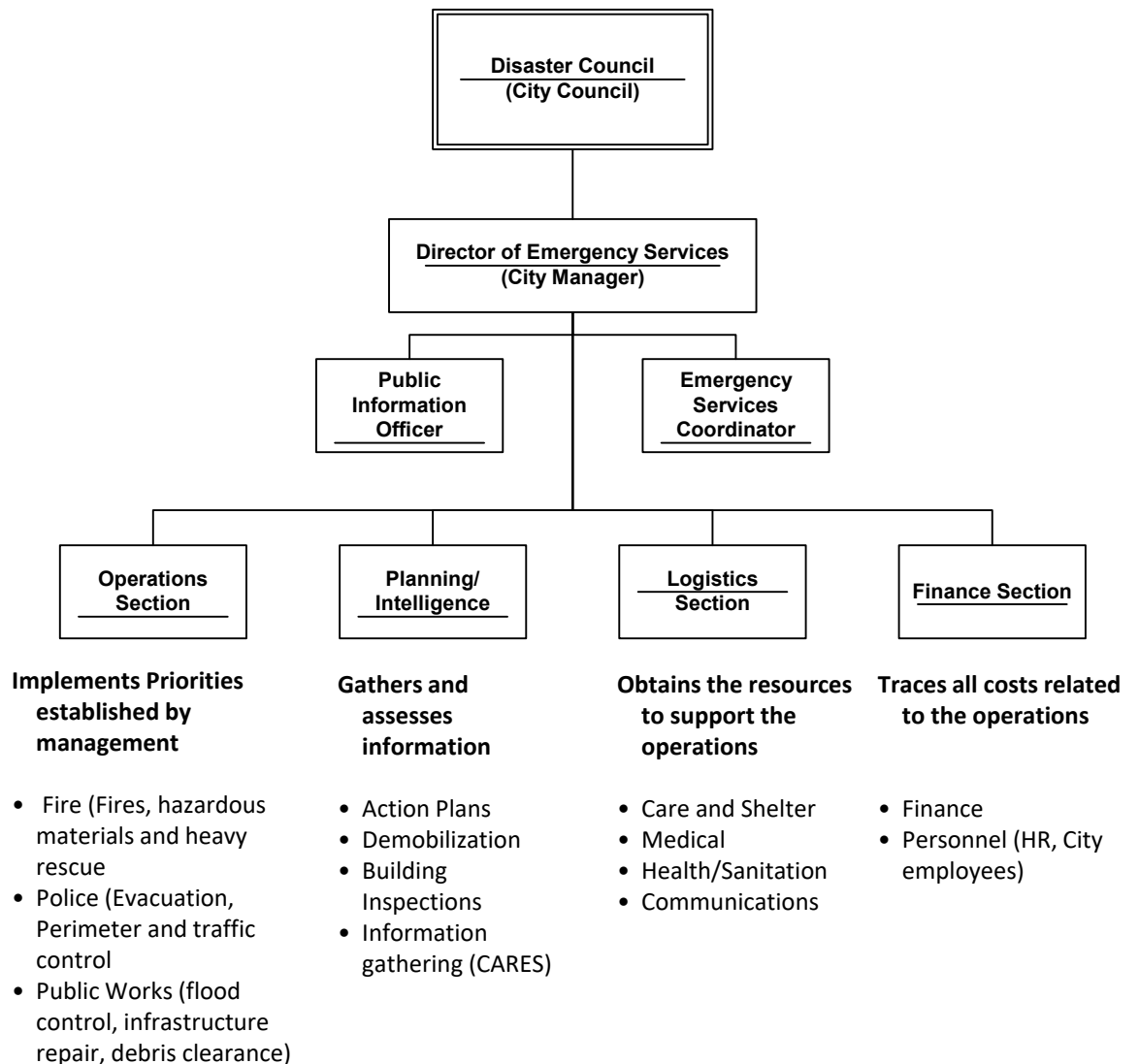
This official copy of the General Land Use Map is held at the Clippington Community Development Department and is available for public viewing during all business hours.

This Land Use Map is one of several General Plans prepared after development in Clippington. Other plans include the Clippington General Plan, Clippington Comprehensive Ordinance, the Clippington Fire and Safety Plan, Clippington Hazardous Waste and Emergency Response Ordinance, the Clippington Flood Hazard Ordinance, Clippington Fire and Safety Plan, and the Clippington General Plan. This General Land Use Map is one of the General Plans for the City and must be coordinated.

This map was prepared from the adopted version of June 1, 2009 as part of the General Land Use Map. The City of Clippington is neither liable nor responsible for the use of this map based on individual systems.

# Incident Command System

... one more time



---

# Incident Command System

... one more time

## Command

- Command is the action taken to direct, order or control resources by virtue of some explicit legal, agency, or delegated authority. The on-scene command of an incident or an event is carried out by the **Incident Commander** who is commonly referred to as the IC.

## Operations

- Operations is responsible for the coordinated tactical response directly applicable to, or in support of the mission(s) in accordance with the Incident Action Plan. In ICS, Operations is a Section level function within the organization. On smaller incidents, the functions of operations are usually performed by the IC.

## Planning/Intel

- The planning function is responsible for the collection, evaluation, and documentation of information about the development of the incident and the status of resources. When activated for an incident or event, Planning or Planning/Intelligence is always found at the Section level. If the planning function is not activated, all planning functions will be the responsibility of the IC.

## Logistics

- The Logistics Section is responsible to provide facilities, services, personnel, equipment, and materials in support of the incident. The requirement to provide on-site logistical support will vary based on the size and scope of the incident, the functions involved, and the discipline that has incident jurisdiction.



Cupertino  
ARES/RACES

---

# ICS in the Field

## Plan

- Ark Sites will establish ICS command systems and respond to a territory of the City.
- CARES members will participate in their staffing.

## Question...

- What does the ARK site look like?
- What are the staffing, material, and information flows that are required to support the deployment?

---

# ICS in the Field

## Approach

- Review three flows (currently under design) that we can anticipate at an ARK site...
  - Staffing
  - Material
  - Information
- Imagine the staffing levels to support a Field ICS site.
- Understand the corresponding information flows that we can anticipate to occur at the site.

**NOTE \*\* THIS IS WORK IN PROGRESS \*\***

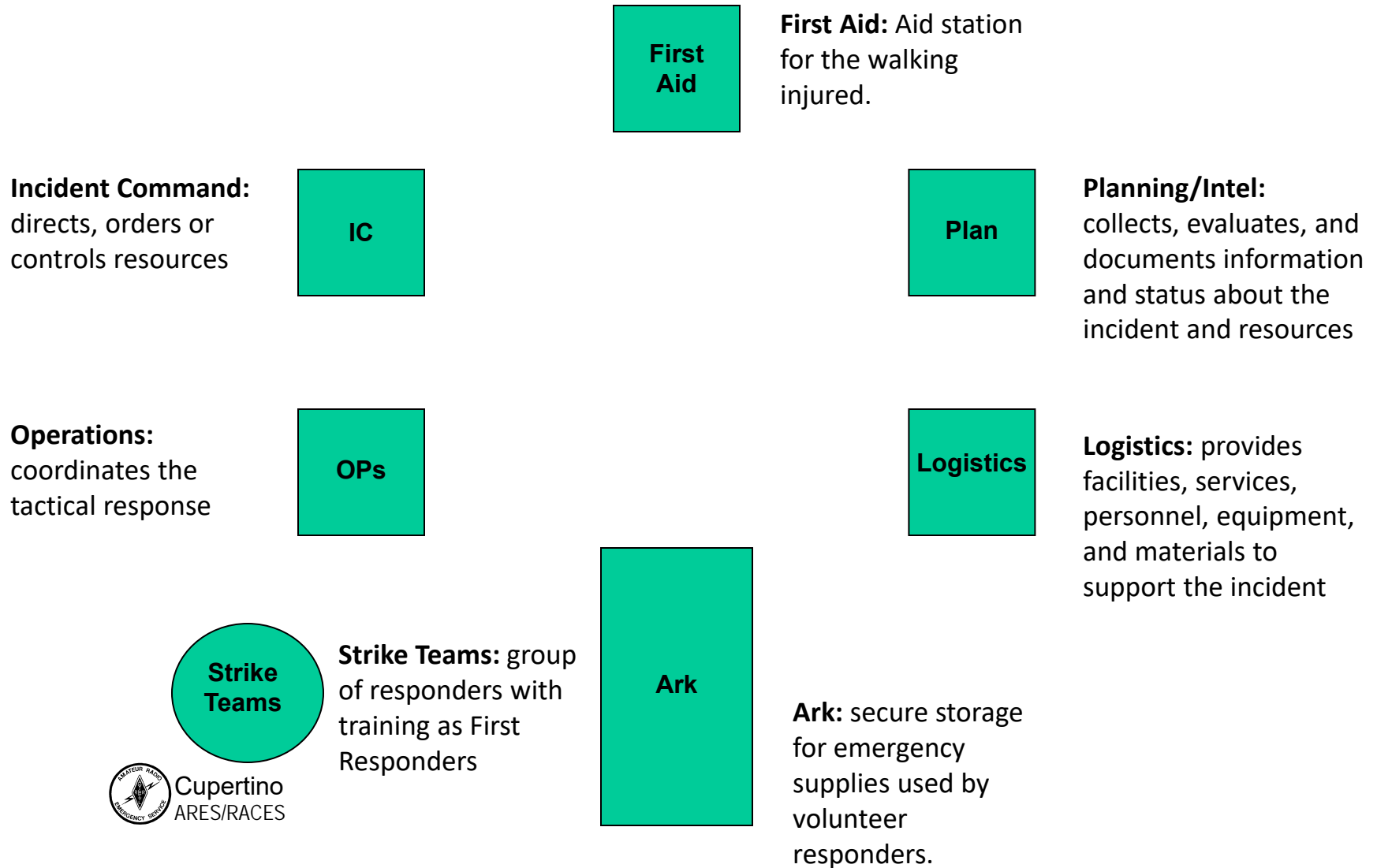


Cupertino  
ARES/RACES

---

# ICS in the Field

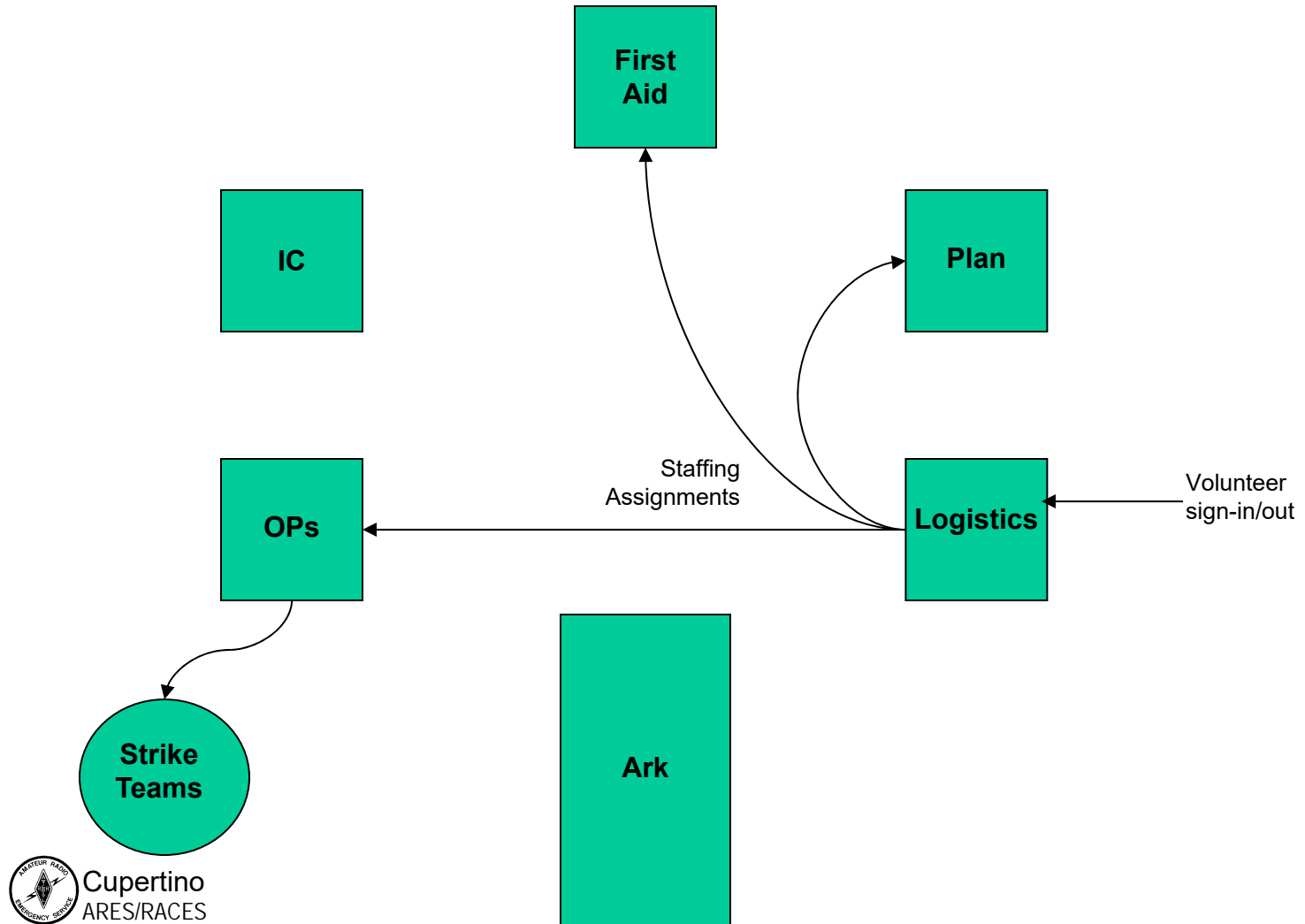
## General Ark Site Components





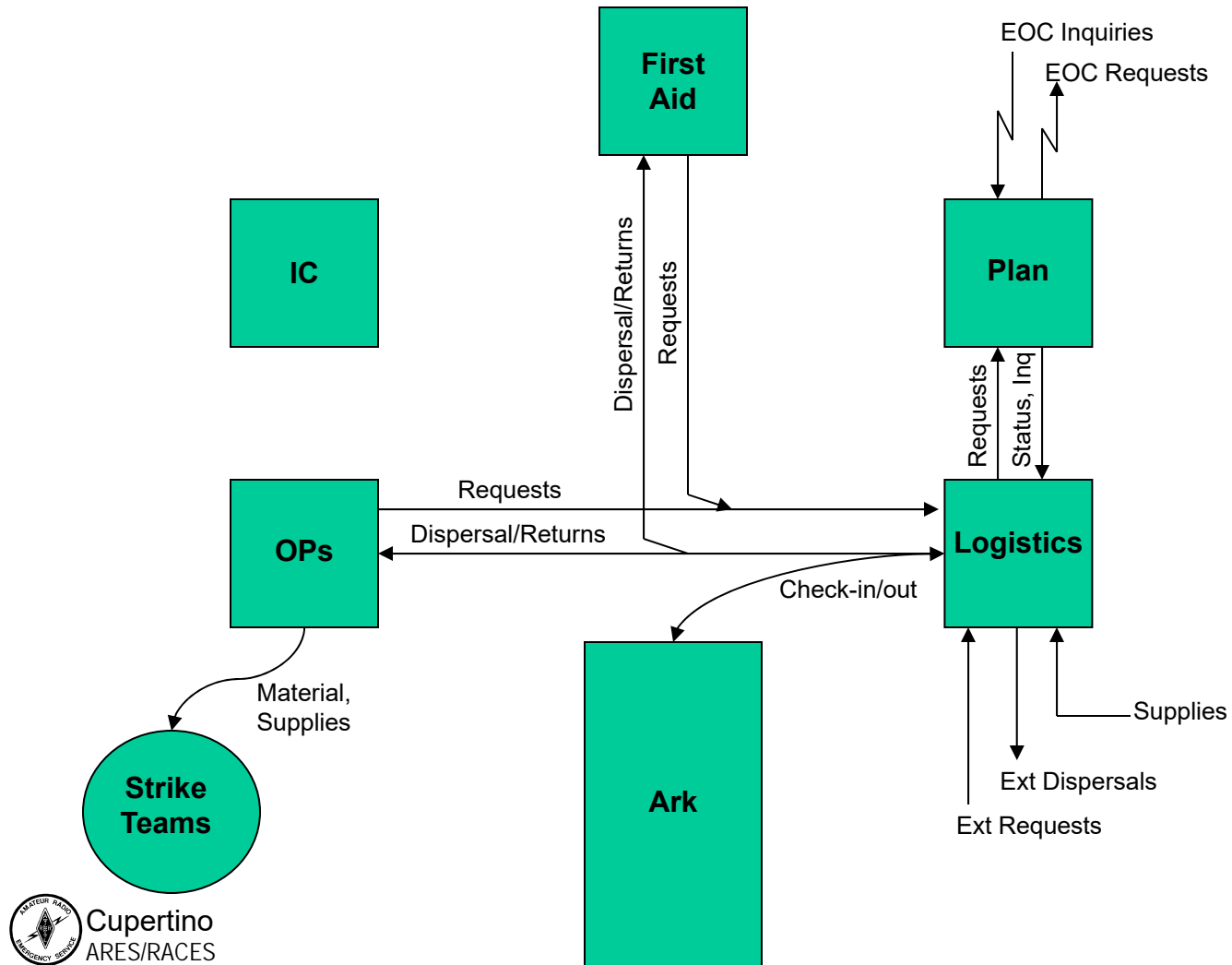
# ICS in the Field

... Staffing Flows (basic)



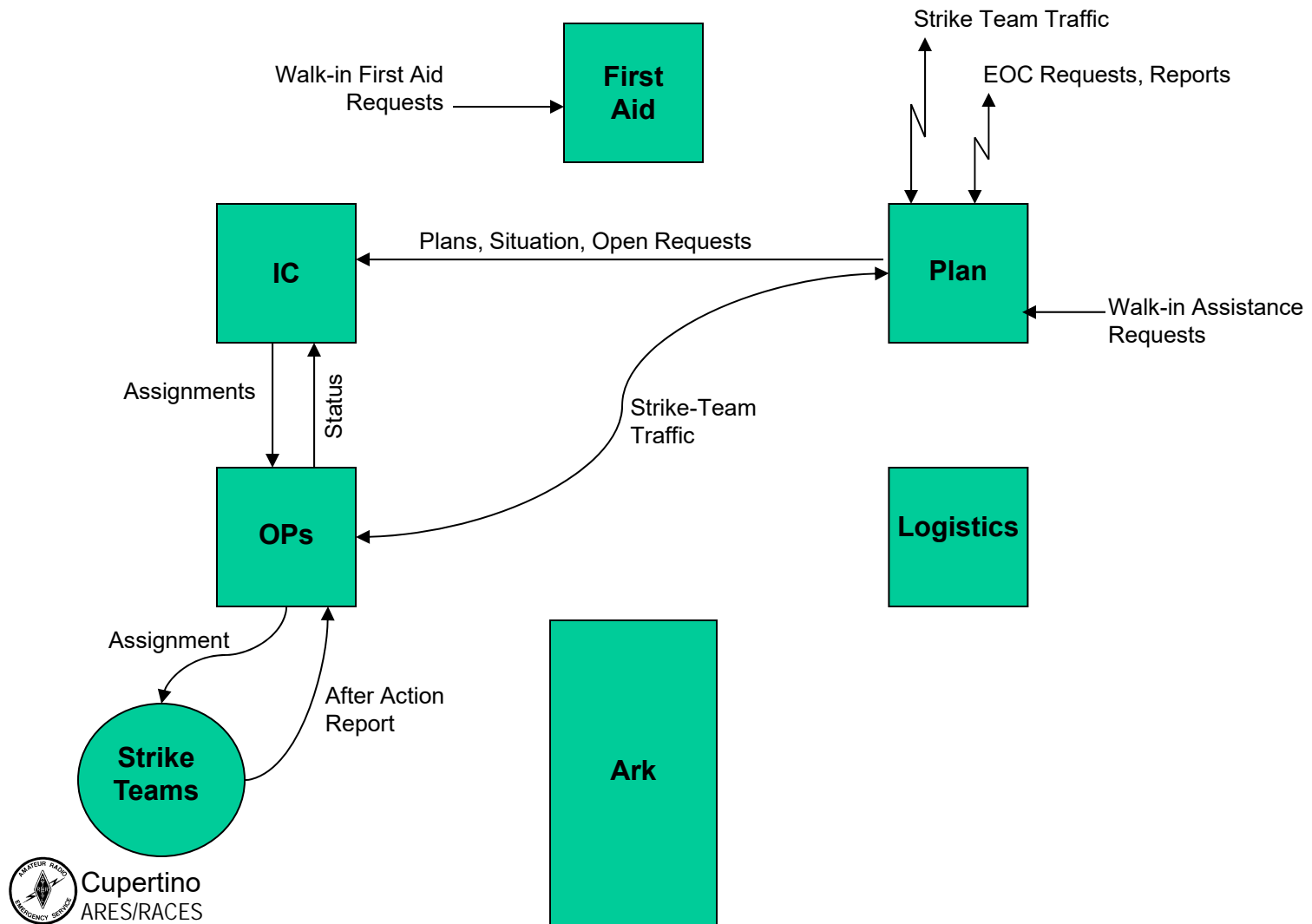
# ICS in the Field

... Material Flows (basic)



# ICS in the Field

## ... Information Flows (basic)



# ICS in the Field

## Example: Processing walk-in requests for assistance

- Collect information walk-in requests (1)
- Log and compile information on the requests
- Route requests for the appropriate action
- Send traffic on summary and detail information to the EOC

Cupertino OES Field Assistance Request Form			
Person submitting the report	<b>(1) Reported By:</b> Date: _____ Time _____ Name _____ Address: _____ Contact Phone: _____		<b>(2) Incident Location:</b> Check if same as Reported By <input type="checkbox"/> When did Incident happen? _____ Name _____ Address1 _____ Address2 _____
	<b>(3) Incident Description</b> (describe the nature of the problem; use back of form if more space is needed) Check all that apply <b>PRINT CLEARLY</b> <input type="checkbox"/> Injuries <input type="checkbox"/> Person trapped <input type="checkbox"/> Structure Fire <input type="checkbox"/> Structure Collapse <input type="checkbox"/> Utility problems <input type="checkbox"/> Access problems <input type="checkbox"/> Other		
	<b>(4) Reporting Location:</b>		<b>(5) Control Number:</b>
OES Use Only	<b>(7) Action Taken</b> (describe what has been done)		
	Date	Time	Action
<b>(8) Closed Date/Time:</b>			<b>(9) By:</b>

NOTE 1: Field Assistance Request Form and underlying process is still in development



---

# ICS in the Field

## Afterthoughts

### Notes

- The need for accurate record-keeping – people, supplies, event information – is critical to the city for cost recovery, material replenishment, Workmans Comp processing, etc.
- CARES is being asked to take a more active role in information management, both in the field and in the EOC.

---

# Next Steps

## **Ark Drill, 21-May, Hyde Middle School, 9:00am – 12:00pm**

- This is a working drill to setup, confirm, and document an Ark Site. CARES will be participating in support of the Planning/Intel Section.

## **Cupertino OES Joint Drill, 11-Jun, 9:00am – 12:00pm**

- CARES, CERT, and MRC will activate in a field deployment to staff field locations, take walk-in assistance requests, open and set up 1 or more Arks, and pass traffic between field and EOC locations.

