

Packet Radio Overview

Cupertino Citizen Corp

2 October 2014 (Revised)
Jim Oberhofer KN6PE

Outpost Packet Message Manager

Overview

Outpost Packet Message Manager

What is Outpost?

- A Windows-based packet messaging client that hides the complexity of the packet world
- Supports ARES/RACES teams meet the needs of their local served agencies to pass digital message traffic
- Automates and manages all message handling between you and the BBS
- Lets you read, delete, create, reply to, or forward messages back to the BBS
- SCCo Packet Installer is available from County web site
<http://www.scc-ares-races.org/packet.html>
- General purpose version is available from Outpost web site
<http://www.outpostpm.org/>

Overview

Outpost Packet Message Manager

Why Outpost?

- **Leverages the existing packet hardware, network, and BBS infrastructure**
 - Uses your existing TNC and packet radio equipment
 - Compatible with many existing BBSs and TNC PBBSs
 - Only your packet client (end-user program) changes
- **Hides the complexity of the packet operating environment**
 - Similar look and feel to contemporary email programs
 - Shorter learning curve for packet operations
 - Allows users to... *“focus on the message, not the medium”*
- **Implements most local emergency management policies for digital communications**

Overview

Outpost Packet Message Manager

Feature highlights

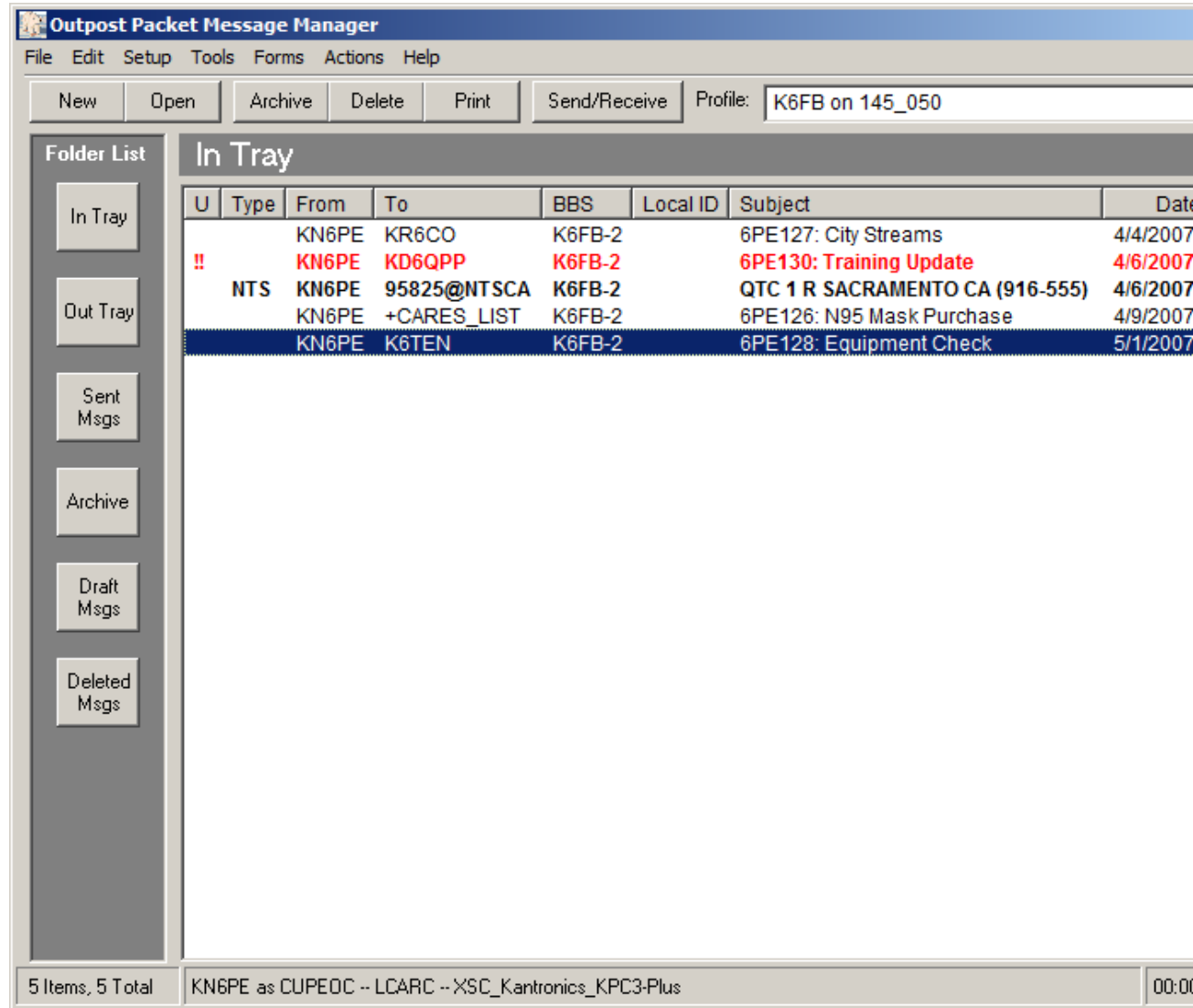
- **Message support**
 - Private, NTS, and Bulletin messages
 - Text formatting in a free-form message window
 - NTS Message Maker with an ARL message wizard
 - On-line report builder
- **Send/Receive Session (connection) control**
 - Serial, AGWPE, and Telnet interfacing with over 20 PBBS and BBSs
 - Controls connecting, sending messages to and retrieving messages from the BBS
- **Configurations and Setups**
 - BBS, TNC, and Interface configurations
 - message type and retrieval options
 - supports 3 ways for automatically initiating send/receive sessions

Overview

Outpost Packet Message Manager

Message support

- Familiar email-app look & feel
- Separate folders for message storage
- Clear message identification (unread=**BOLD**, urgent=**Red**)
- Formal message workflow
- BBS and interface setups
- Additional settings control how Outpost behaves

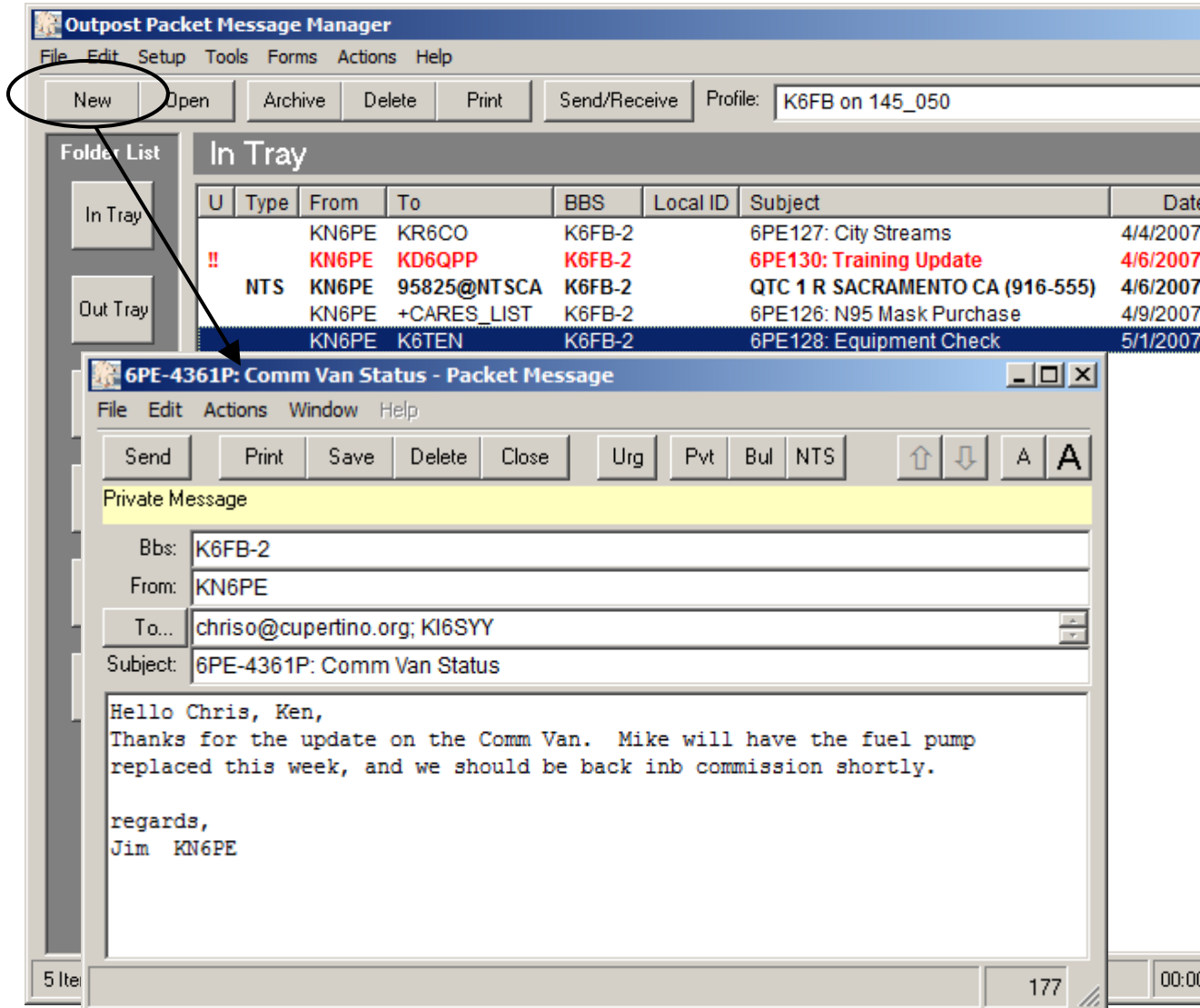


Overview

Outpost Packet Message Manager

Creating Messages

- Supports Private, Bulletin, and NTS message types
- Message formatting before sending
- Set messages to **Urgent**
- Request delivery or read receipts
- Different ways for originating messages:
 - Freeform
 - Ics213mm
 - NTS Message Maker
 - PacFORMS
 - On-line reports

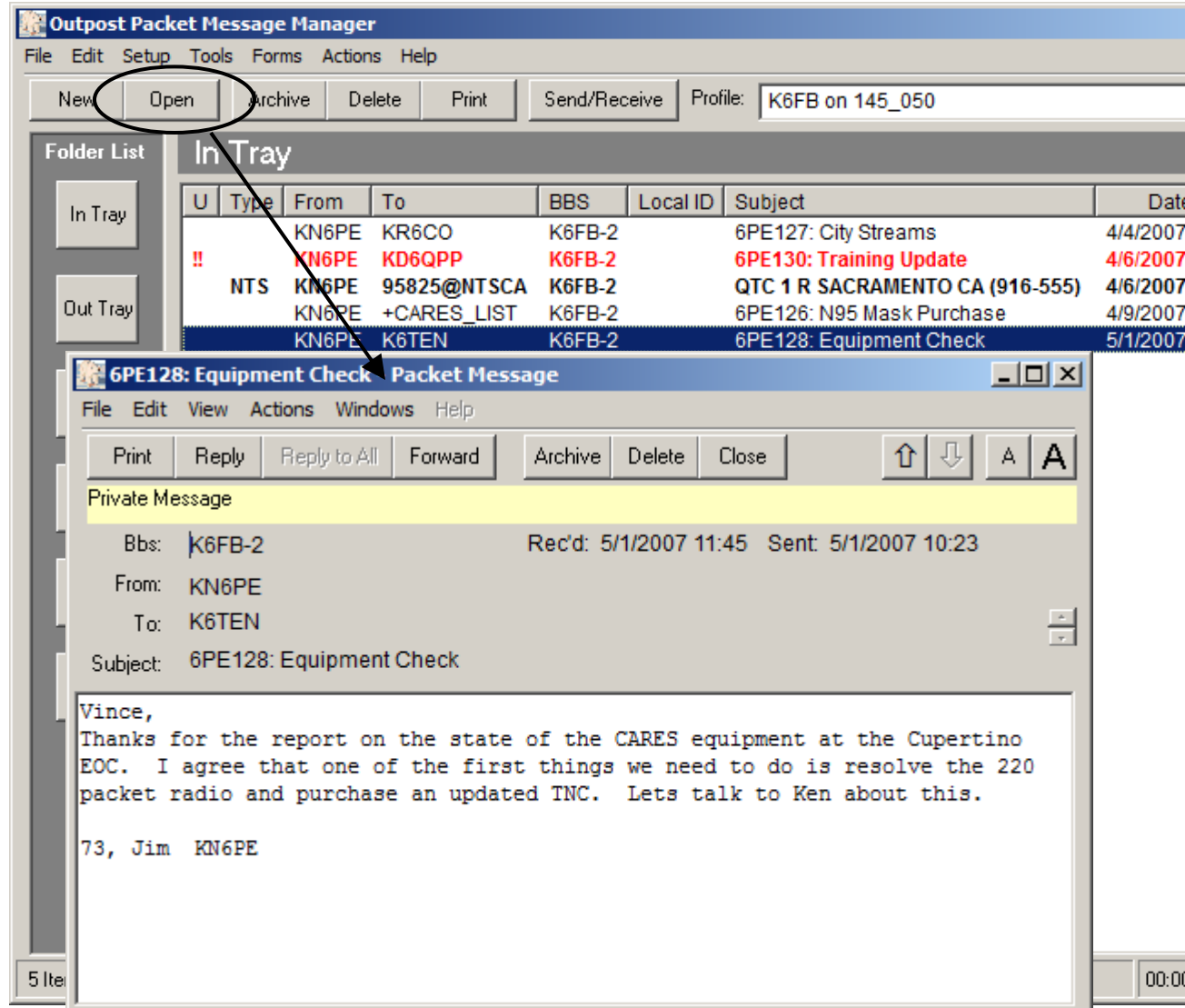


Overview

Outpost Packet Message Manager

Viewing messages

- Supports viewing, printing, deleting or saving a message to a local file
- Reply and Forward message formatting

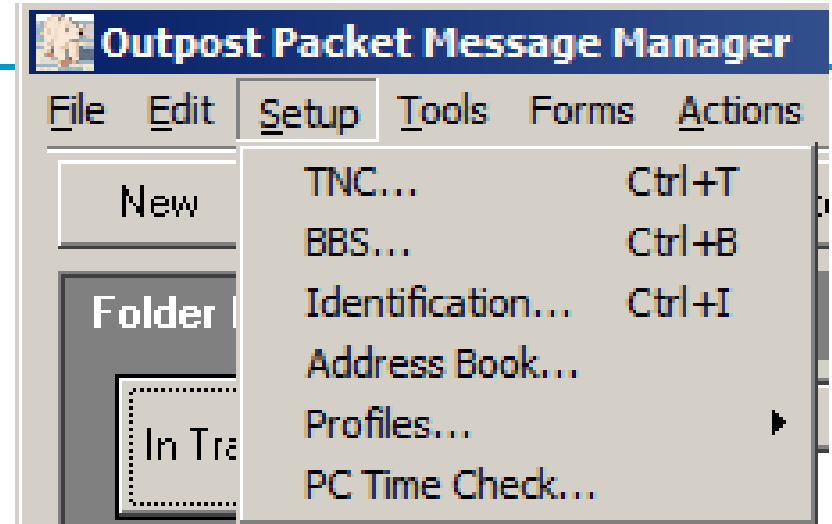


Overview

Outpost Packet Message Manager

Managing Setups

- Sets up a TNC or I/O device, includes
 - Serial / Comm Port
 - AGWPE (for KISS devices)
 - Telnet
- Sets up a BBS definition
- Sets up the station identification.
This section also enters telnet and Winlink account and password data.
- Sets up address book entries
- Manages Profiles – specific configurations of settings
- Runs the PC Time Check Program

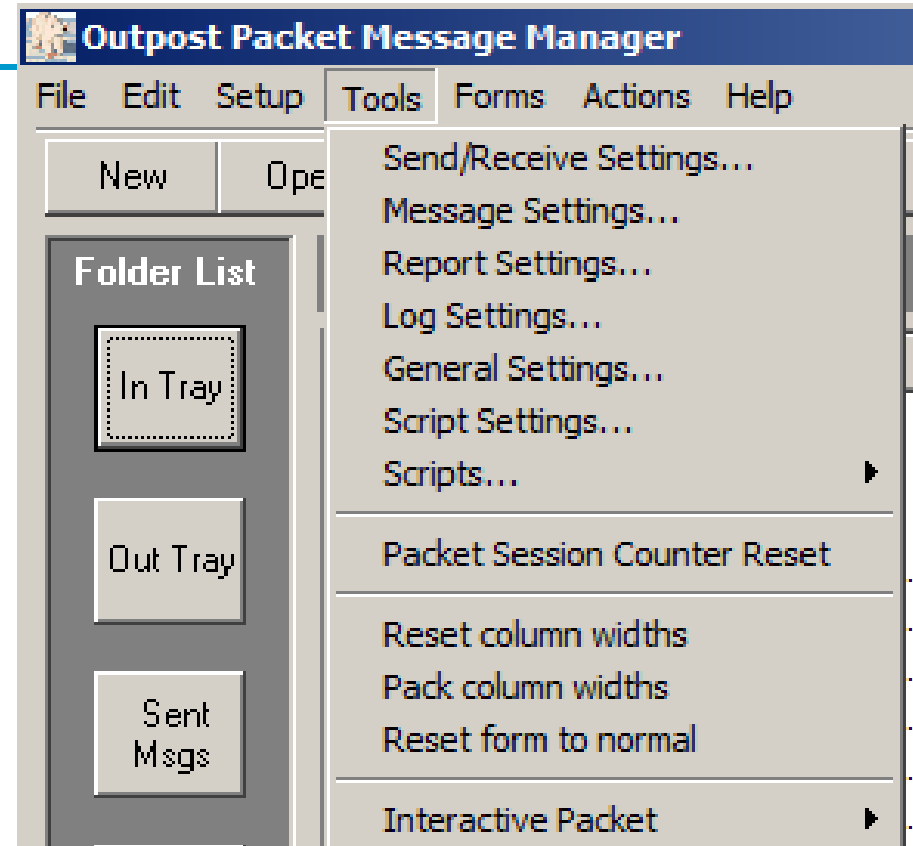


Overview

Outpost Packet Message Manager

Program controls

- Controls the flow of Send/Receive Sessions
- Sets how messages are created and handled
- Set various data fields to automatically populate on-line reports and messages
- Set up default directory names
- Various log settings
- Outpost Scripting
- Form sizing controls
- Separate Interactive Packet Windows for...
 - lpserial.exe – Serial TNCs
 - lpagwpe.exe – AGWPE
 - lptelnet.exe – Telnet

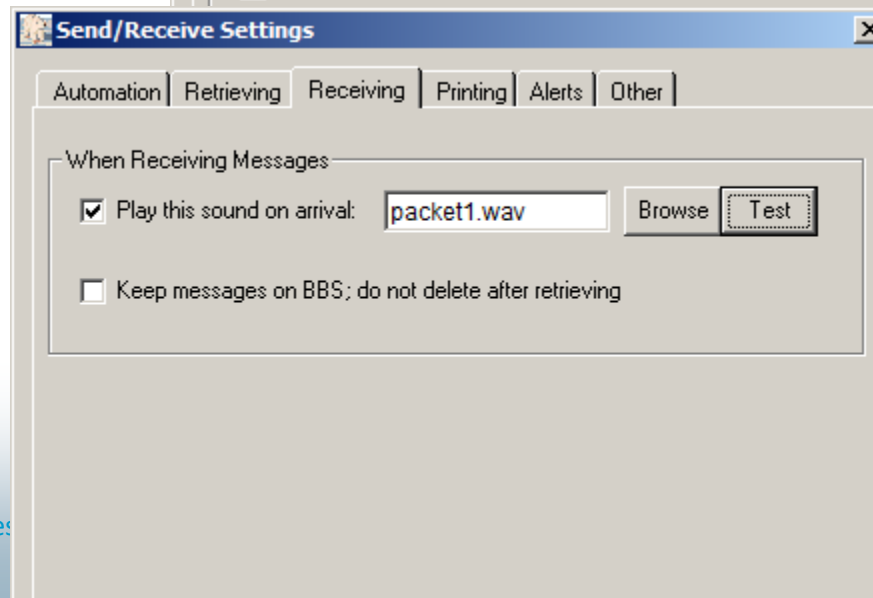
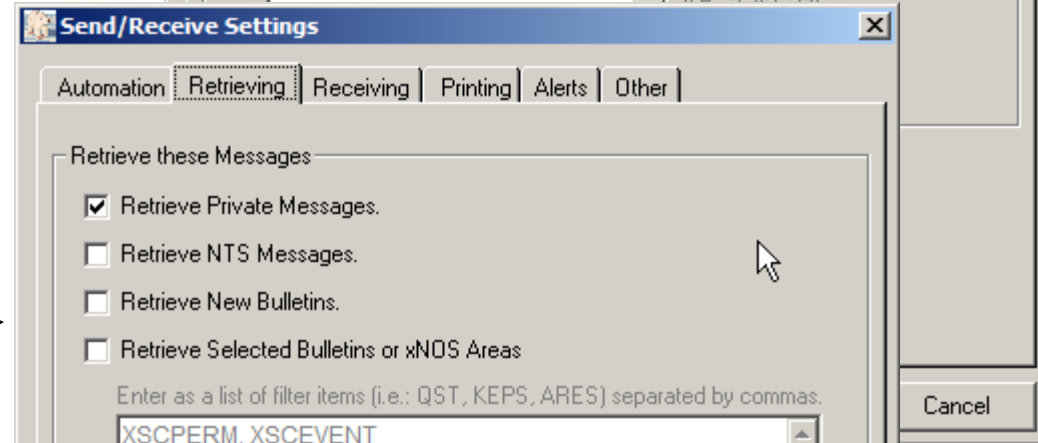
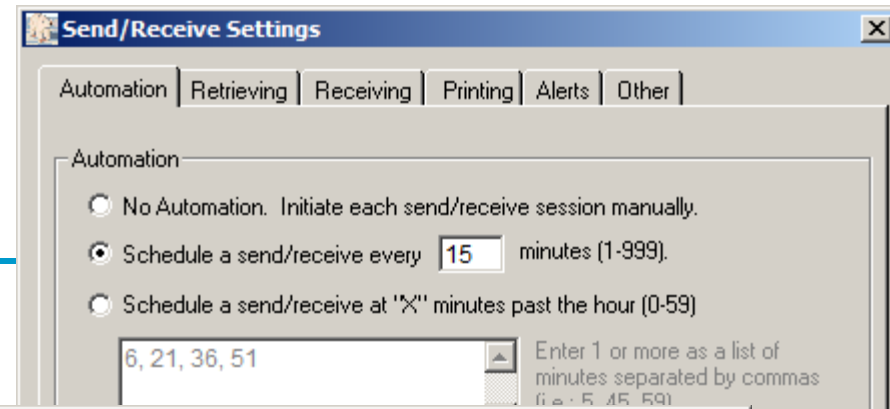


Overview

Outpost Packet Message Manager

Send/Receive Settings

- Selects different ways to automate the message send/retrieve sessions
- Select which message types are to be retrieved
- What to do when receiving messages
- Additional controls to manage printing, Alerts, and program settings

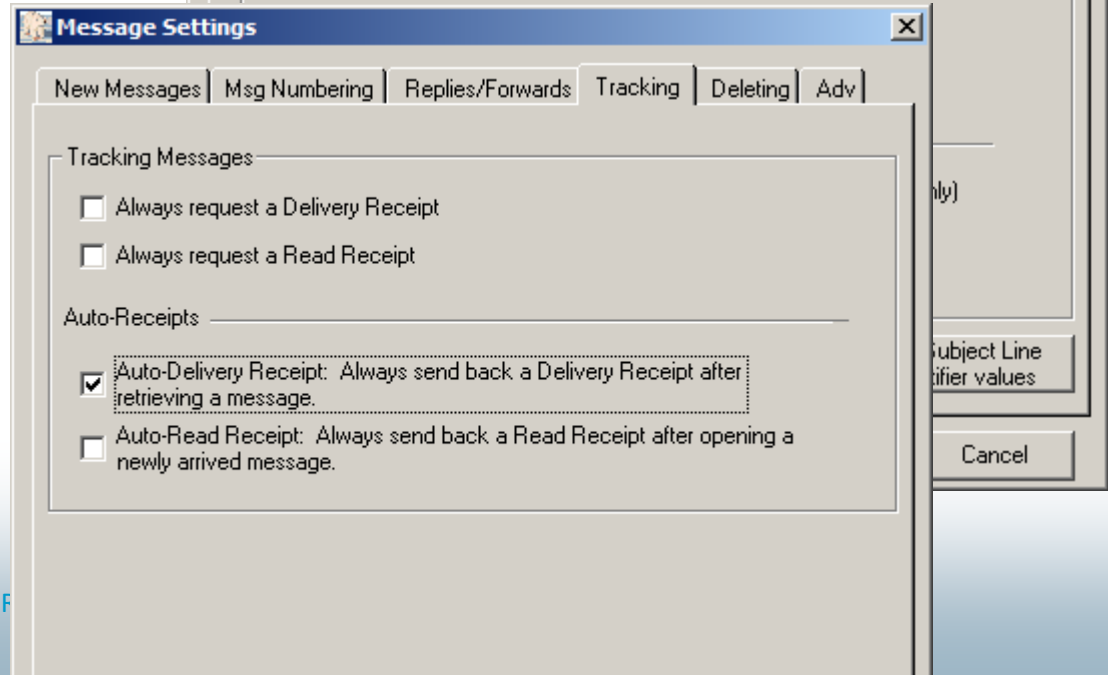
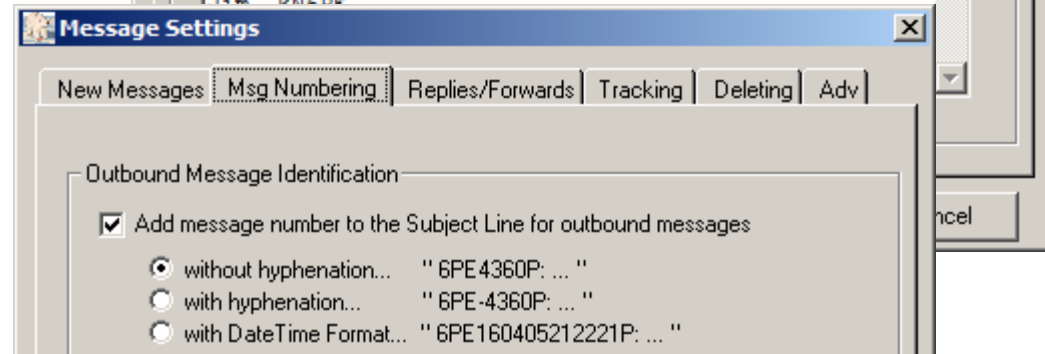
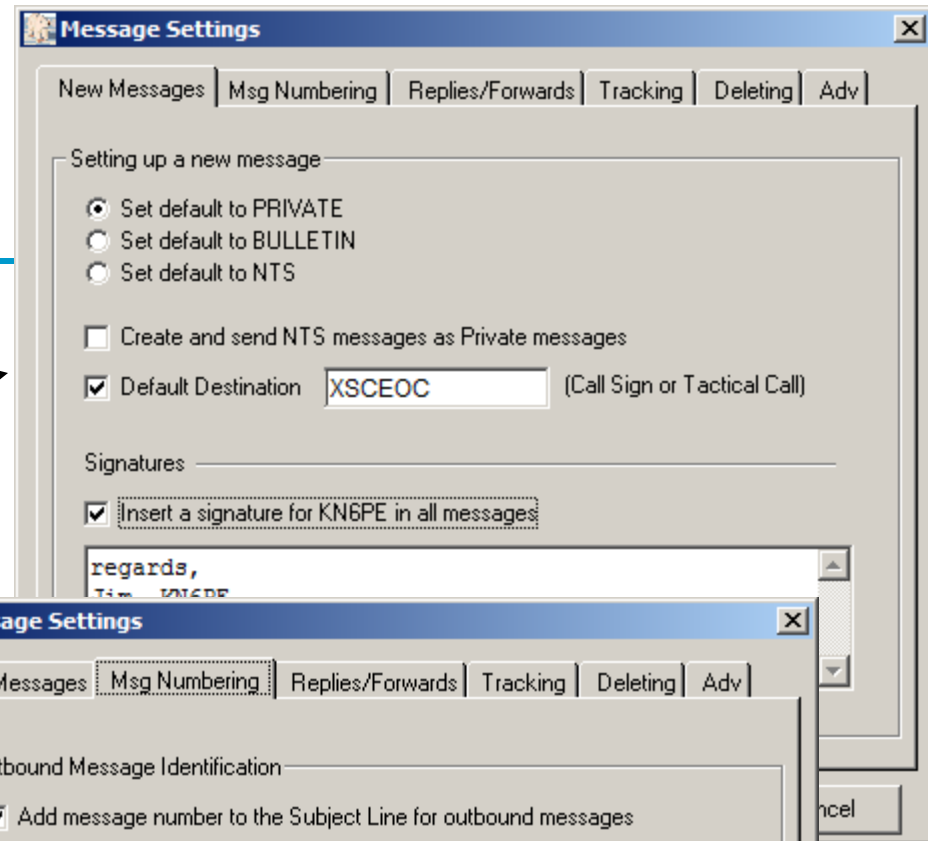


Overview

Outpost Packet Message Manager

Message Settings

- Settings for new messages, includes
 - Default destinations
 - Auto message numbering
 - Add a Signature
- Handling Message Numbering
- Set defaults for message receipts
- Other Setting for deleting messages and setting up for PacFORMS & Ics213mm

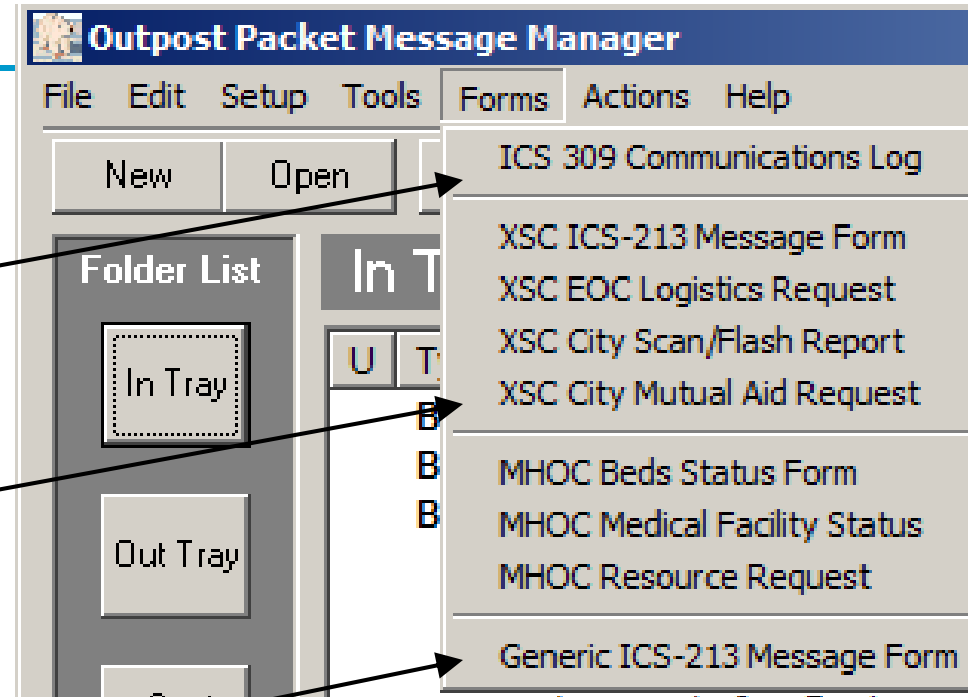


Overview

Outpost Packet Message Manager

Reports and Forms

- Produces an ICS309 Communications Log
- Launches and populates specific fields in SCC RACES PacFORMS (this list varies depending on the install version).
- Supports a generic ICS213 message form



Packet in Cupertino

How are we deploying packet?

1. Operate in the EOC for EOC-to-County message handling
2. Operate at the ARKs for ARK-to-City EOC message handling
3. Leverage the County's Packet infrastructure (BBSs)
4. Continue to align to the state's message hierarchy protocol
5. Continue to define the message requirements and develop message templates for ARK-to-EOC (structured) message handling.



Aligning Packet in California

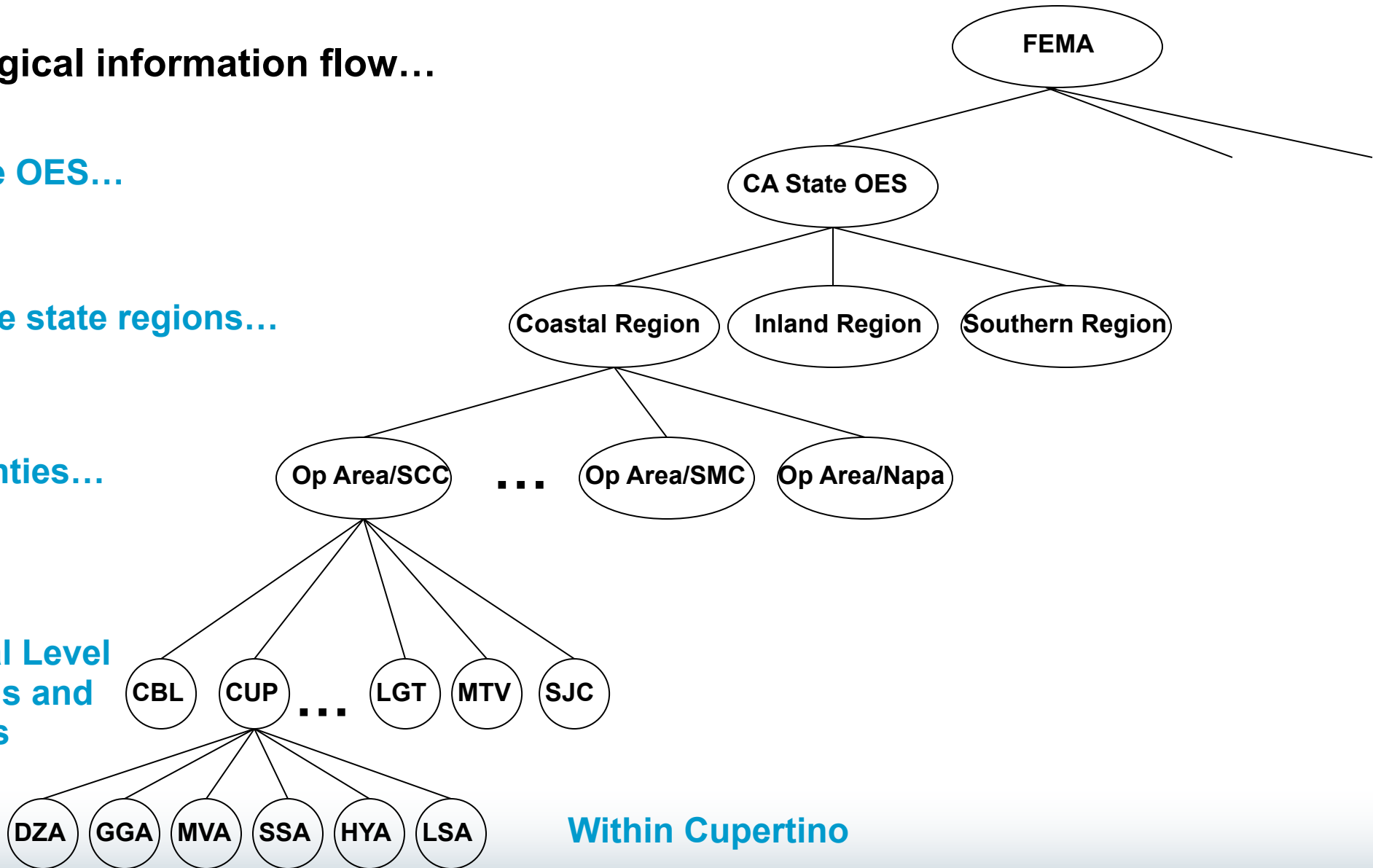
Logical information flow...

State OES...

Three state regions...

Counties...

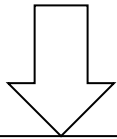
Local Level towns and cities



Within Cupertino

Addressing a message

The message we want to send from the ARK to the City's Ops Chief



From: Seven Springs Ops
To: Cupertino Ops
Subj: Ark Staffing Summary

~~~~~

~~~~~

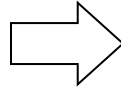
~~~~~

~~~~~

Signed,
Dave Miller Ops Chief

Addressing a message

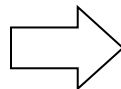
We want to “embed” our message below into a packet message with additional addressing information



From: Seven Springs Ops
To: Cupertino Ops
Subj: Ark Staffing Summary

~~~~~  
~~~~~  
~~~~~  
~~~~~

Signed,
Dave Miller Ops Chief



BBS: W1XSC-1
From: CUPSSA
To: CUPEOC
Subj: SSA134: Ark Staffing Summary

From: Seven Springs Ops
To: Cupertino Ops
Subj: Ark Staffing Summary

~~~~~  
~~~~~  
~~~~~  
~~~~~

Signed,
Dave Miller Ops Chief

Cupertino Packet Addresses

Tactical Calls

Arks

- CUPDZA DeAnza College Ark
- CUPGGA Garden Gate Ark
- CUPHYA Hyde Middle School Ark
- CUPLSA Larsen School Ark

- CUPMVA Monta Vista Ark
- CUPSSA Seven Springs Ark
- CUPSCA Stevens Canyon Ark
- CUPMBA Montebello Ridge Ark

Public Safety

- CUPCSO County Sheriffs station,
west side
- XSCF71 Cupertino Fire
- XSCF72 Seven Springs Fire
- XSCF77 Monta Vista Fire

Services

- CUPMED Cupertino Medical Center
- CUPSAN Cupertino Sanitary District
- SJWEOC San Jose Water in Cupertino

City Facilities

- CUPBBF Blackberry Farm (OES)
- CUPCRE Creekside Park
- CUPCCY Cupertino Corp Yard
- CUPEOC Cupertino EOC**
- CUPJOL Jollyman Park
- CUPMEM Memorial Park
- CUPOPS Field Operations
- CUPPOR Portal Park
- CUPQLN Quinlan Center Shelter
- CUPWVS West Valley Service Center

SPARE Addresses

- CUP001
- CUP002
- :
- CUP009

Addressing in Cupertino



Anatomy of a message

1. Packet Address header

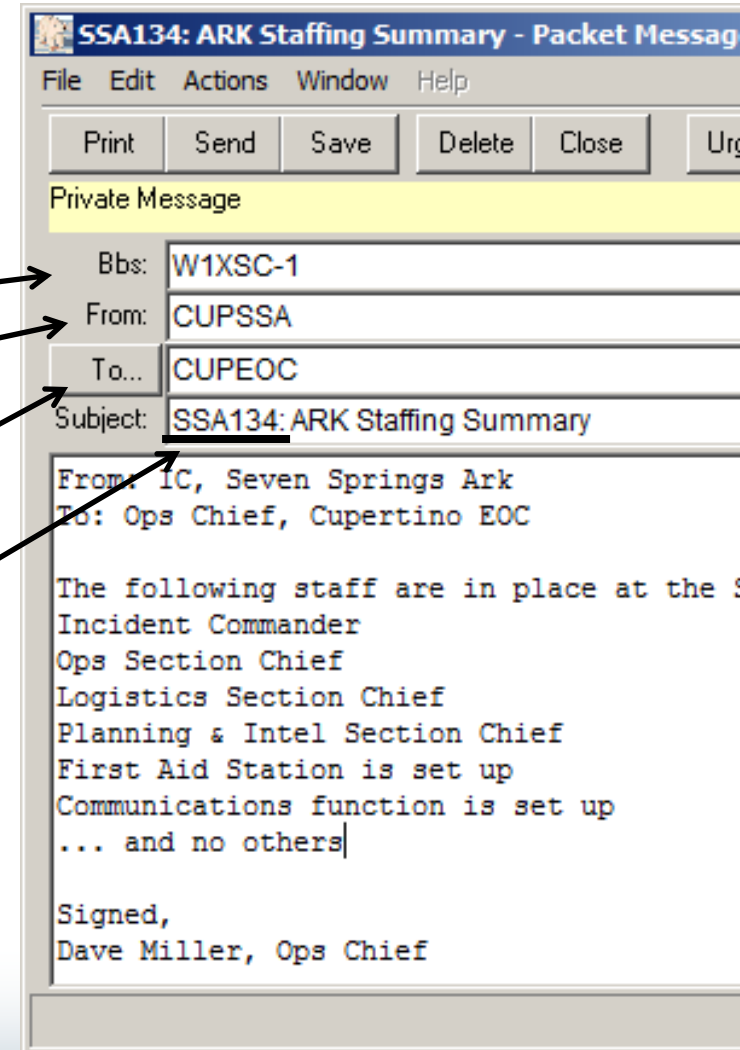
The packet header gets the message to the correct Packet Station

BBS: the “Store and Forward” mail drop where this message will be sent. **Automatically filled in**

From: Tactical Call of your packet station. **Automatically filled in.**

To: Defaults to the destination station set up in Outpost. This can be changed.

Subject: The Message ID is **automatically added** to the subject line.



Anatomy of a message

2. Recipient Address and Message

Once the message gets to the destination Packet Station, address the message to the right person.

Subject – Fill in the rest of the subject line

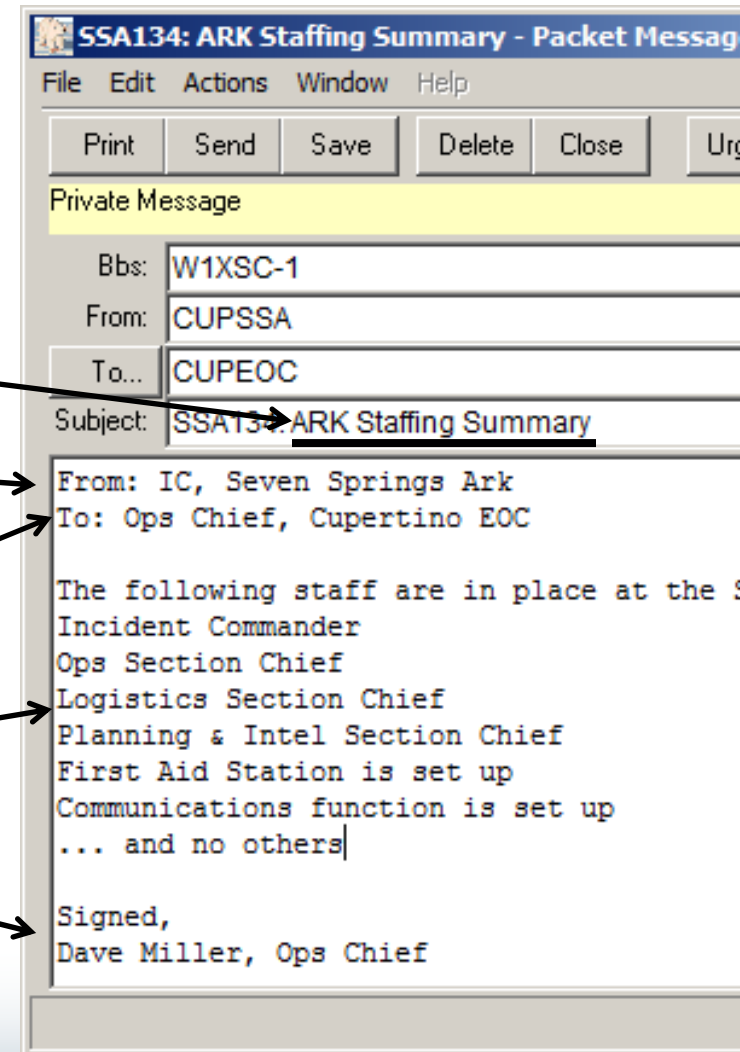
Message Body

From: Who is this message from? ICS position or function

To: Exactly to whom do you want this message to go? ICS position or function

The Message: Will in the details of the message.

Signature: Put who the message is from



Packet Radio Users Guide

Table of Contents

1. Ham Radio Packet Overview
2. Setting up a Packet Station
3. Packet Message addressing basics
4. Creating Packet Messages
 - 4.1 Freeform messages
 - 4.2 Sending a text file
 - 4.3 Sending a PacFORM message
 - 4.4 Sending spreadsheets (.csv file)
 - 4.5 Receiving spreadsheets (.csv file)



Hands on exercise

Thank you

Any Questions?

